

Customer :

customer

Customer part :

customer part

Comment :

Comment

S1=1.54

S2=2.01

Tmax=452

Tp S2=491.0

PI=0.43

HI=107

Sample =1790.30

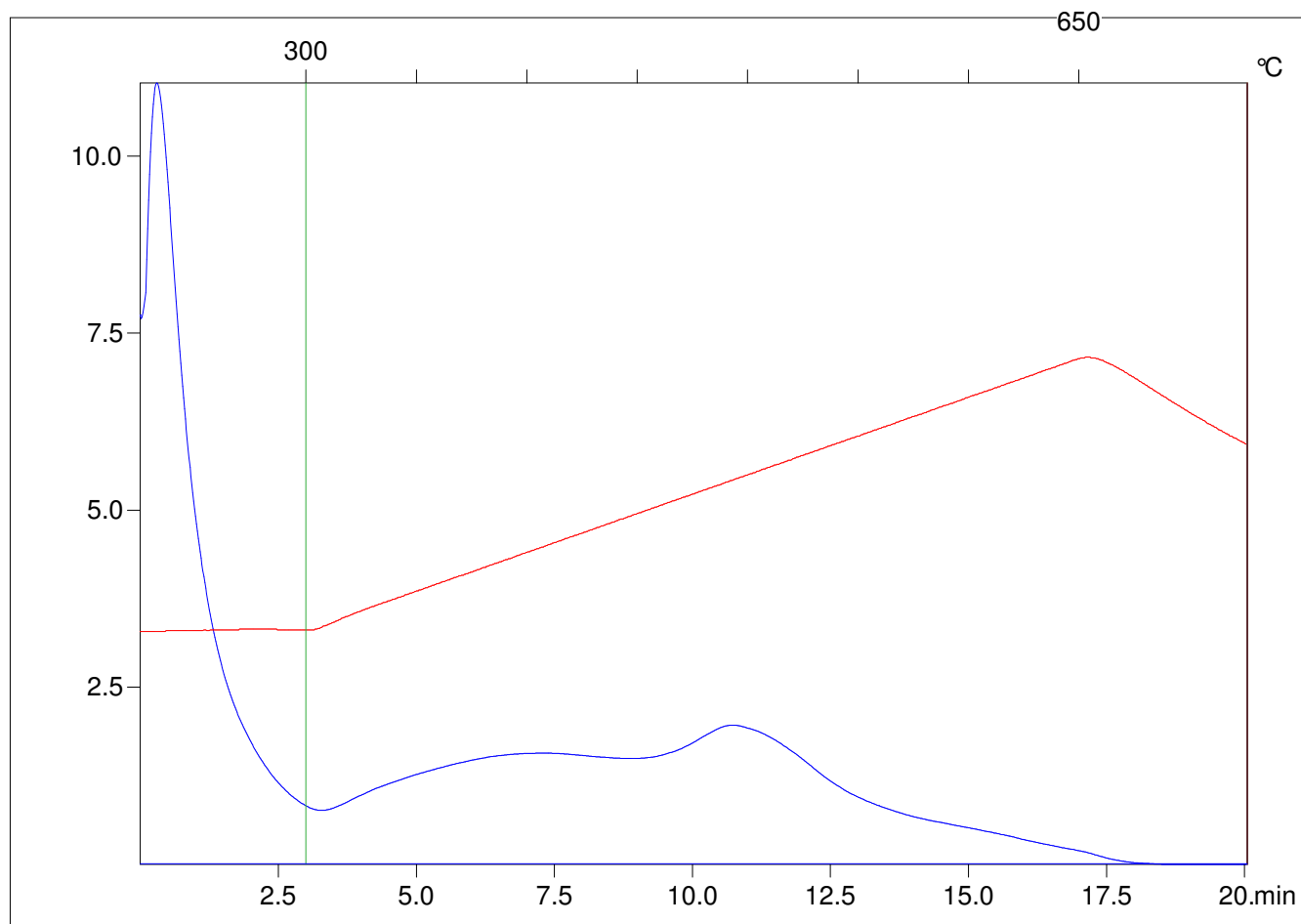
Method =Bulk Rock

Cycle=Basic

KFID(10\*9)=1444

Qty =70.6

TOC=1.88



C:\VINC\PK3\_1792\PK089.R00 : FID pyrolysis graphic

State

Pyro Status

Oxi Status